



MONTHLY MEMBERSHIP PROGRESS REPORT

District 324A6

Results as of: 10/31/2018

GMT: N S SANKAR

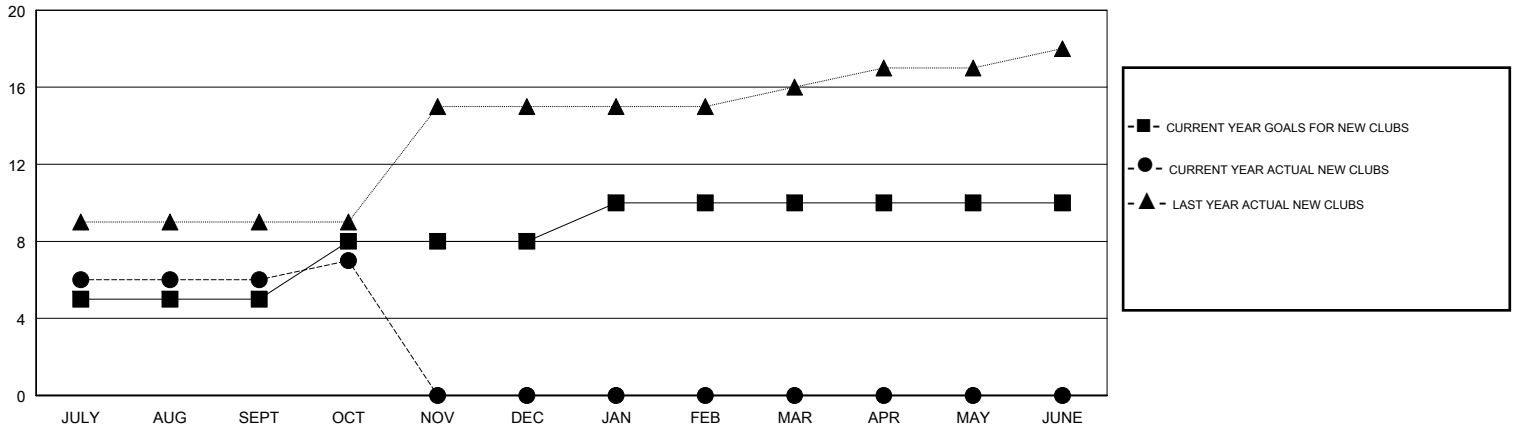
LOCATION INDIA

GMT CA

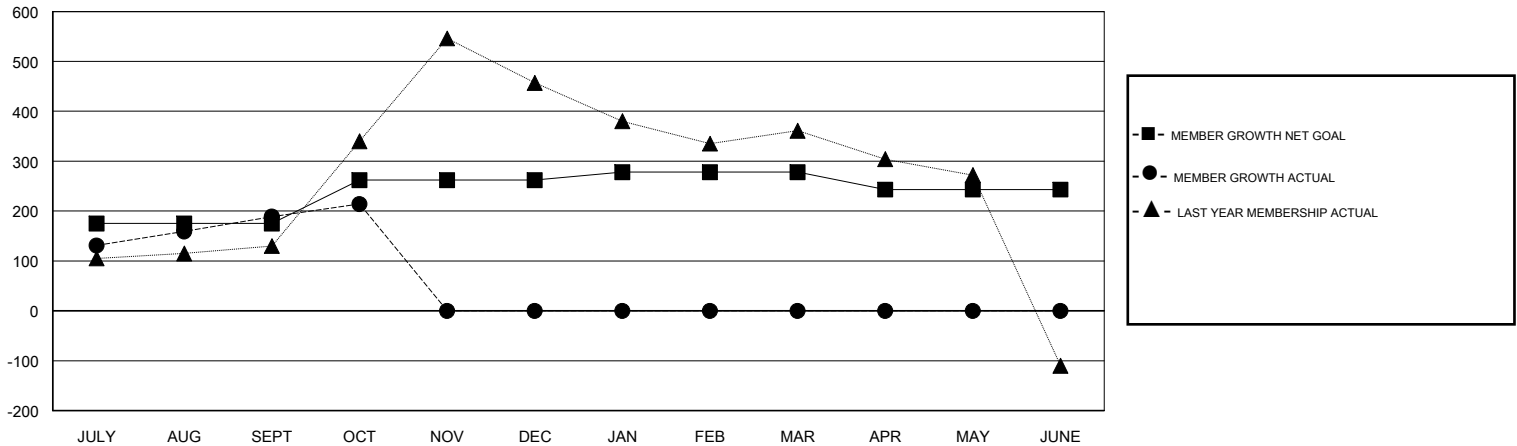
Clubs			
RESULTS FOR 2018-2019			
QUARTER	NEW CLUB GOAL	NEW CLUBS	DROPPED CLUBS
JULY/AUG/SEPT	5	6	1
OCT/NOV/DEC	3	1	0
JAN/FEB/MAR	2	0	0
APR/MAY/JUNE	0	0	0

Members			
RESULTS FOR 2018-2019			
QUARTER	MEMBER GROWTH NET GOAL	MEMBER GROWTH ACTUAL	DROPPED MEMBERS ACTUAL (including transfers)
JULY/AUG/SEPT	175	351	135
OCT/NOV/DEC	87	36	11
JAN/FEB/MAR	16	0	0
APR/MAY/JUNE	-35	0	0

GOALS AND ACTUAL NEW CLUBS CUMULATIVE



GOALS AND ACTUAL MEMBERS CUMULATIVE



DROPPED CLUBS: 1	60 CLUBS OF 135 ADDED 1 OR MORE NEW MEMBERS	<u>GENDER DISTRIBUTION</u>	
DROPPED MEMBERS		MALE	3,484 (72.73%)
DECEASED	3	FEMALE	1,306 (27.27%)
CLUB CANCELLED	14	Women Percentage Fiscal Year Goal: 28%	
OTHER	129	TOTAL FAMILY UNIT MEMBERS	2,670
TOTAL	146	FAMILY MEMBERS PAYING HALF DUES	1,547

[CLICK HERE FOR CUMULATIVE MEMBERSHIP DATA](#)